

新旧线路板的转换

Transformation of the Old PCB and New PCB

Attention

(注意:旧线路板可能有电的,在拿出旧线路板时,请抓住电容(旧线路板上的黑色圆柱),勿碰其它地方,以免触电)

(Attention:The old PCB may have electricity. Please seize capacitor(black cylinder on the old PCB) when taking out the old PCB from the machine. Please don't touch other places of the old PCB to prevent electric shock.)



Steps of Transformation



Fig1

A. 先将机器平放,然后将底座的四颗螺丝拆除,最后移除底座(如图1)

Flat the machine. First remove four screws of the bottom,then remover the bottom. (Fig1)

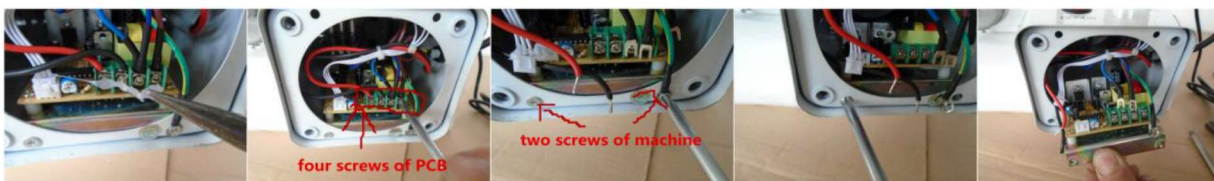


Fig 2

B.用钳子把厌氧胶拿开,然后将扭松线路板上的四颗小螺丝和移除机器上的两颗螺丝,最后把所有的线拔了,拿出旧线路板(图2)。

First , remove the anaerobic and two screws of the machine. Then, unplug all wires after unscrewing four screws of the old PCB. Finally, remove the old PCB from the machine. (Fig2)



Fig 3

C.用手把旋钮盖拨走，然后用扳手扭松螺母并移除螺母和垫片，最后把电位器拿出来。(图 3)

Removing knob by hand.

To remove nut and gasket , loosen nut by use wrench.

Finally, take away potentiometer from machine. (fig 3)

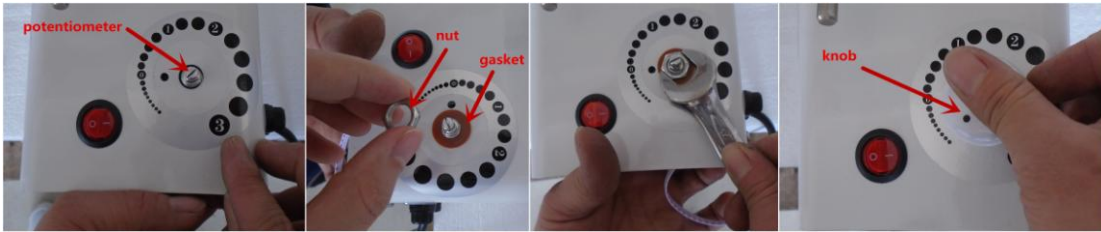


Fig 4

D. 把电位器套进机器上的孔，然后依次把垫片和螺母套进电位器上，用扳手固定螺母，最后把旋钮盖套进电位器上。(图 4)

First, potentiometer is setted into hole of machine.

Then, gasket and nut are setted into potentiometer according to sequence. Fixing nut by use wrench.

Finally, knob is setted into potentiometer. (fig4)

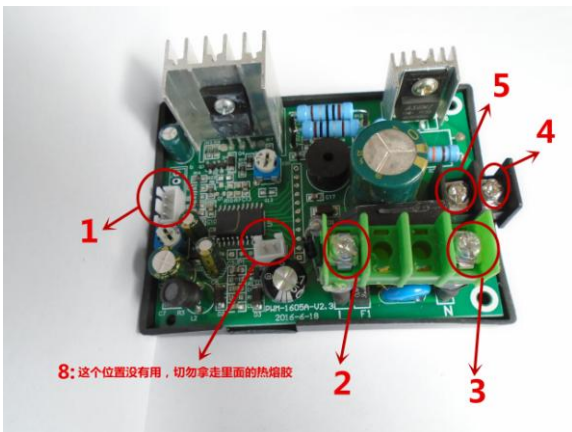


Fig 5

E.把红色线和黑色线分别固定在新线路板的位置“5”和位置“4”。然后把白色线插在新线路板的位置“1”。

First fix the red wire in screw 5 in the new PCB, then fix the black wire in screw 4.

Finally put the white wire into the white hole of the new PCB.(position1 marked on the Fig3)

注：图片上标志“8”的插口是没有用，不需要理会。这个插口用热熔胶堵住了，切勿拿走里面的热熔胶。

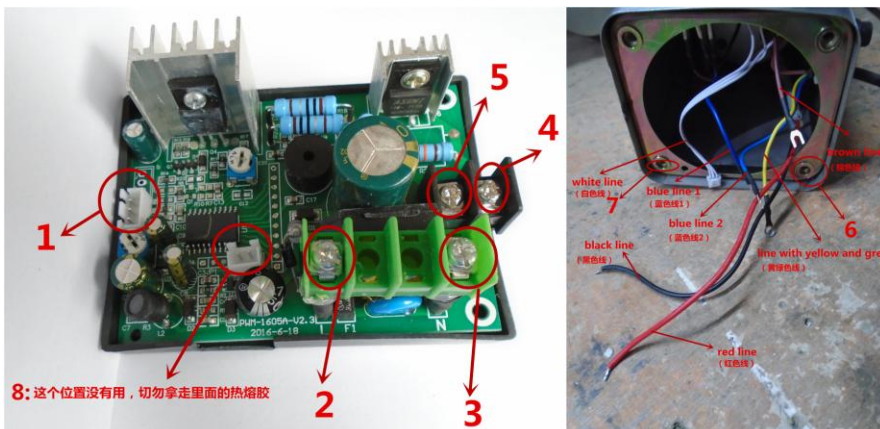


Fig 6



F.放入电路板，将线路板固定块上的两颗螺丝固定，同时把黄绿线 1,2 固定在新电路板的位置“7”。

First, put the new PCB into the machine and fix it. Then fix the yellow-green wires 1 and 2 in screw 7 in the new PCB (Fig4).

G.把两条蓝色线固定在新电路板的位置“3”。最后把棕色线固定在新电路板的位置“2”。（如图 4）

First fix the two blue wires in screw 3. Then fix the brown wire in screw 2. (Fig 4)

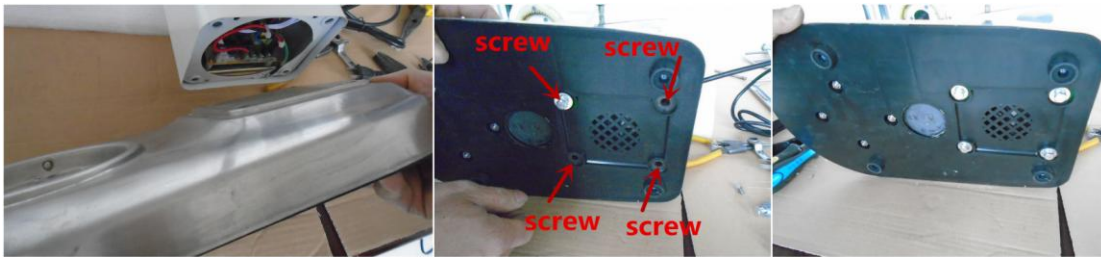


Fig 7

H.完成新电路板的安装后，用螺丝固定底座。

Fix the bottom with 4 screws after installing the new PCB (Fig5).